



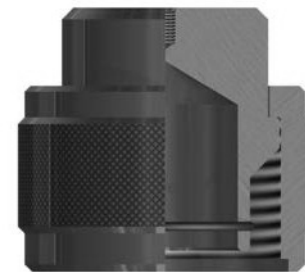
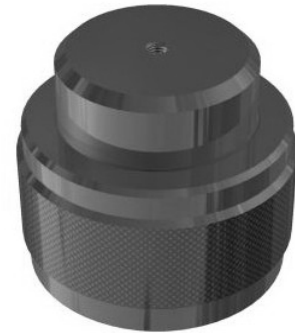
## TEST CAP & TEST PLUG

The **BDWS Test Cap & Test Plug** is available for all sizes of quick union connections to assist with the testing of pressure control equipment.

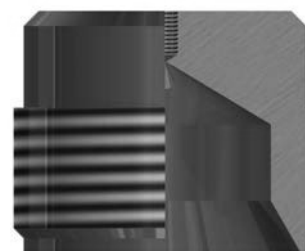
The Test Cap & Test Plug are normally supplied with a 1/2" NPT Port, but it also available blank or with any number and type of port required.

### FEATURES

- Manufactured from Alloy Steel.
- Supplied with various QUN connection.
- 5,000 to 20,000 psi working pressure.
- H2S or Standard service.
- Pressure test to the required Test Pressure.
- Part Number available upon request.



TEST CAP



TEST PLUG