



Lifting Cap

The **BDWS Lifting Cap** is a safe and efficient way of lifting the BOP onto the wellhead. It gives the operator a straight vertical lift, which is essential when connecting quick unions.

A combined Lifting/Test Cap is also available for all sizes of quick union connections to assist with the testing of pressure control equipment.

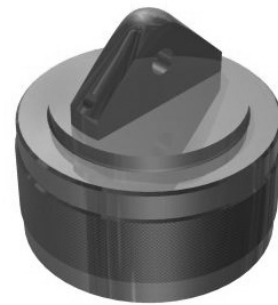
The Lifting Cap/ Lifting Test Cap is normally supplied with a 1/2" NPT port, but is also available blank or with any number and type of port required.

FEATURES

- Manufactured from Alloy Steel.
- Supplied with various QUN connection.
- 5,000 to 20,000 psi working pressure.
- H2S or Standard service.
- Pressure test to the required Test Pressure.
- Part Number available upon request.



INTEGRAL



INTEGRAL w/ TEST PORT



w/ EYE NUT



w/ SWIVEL EYE