



## Crossover Adapter

The **BDWS Crossover Adapter** is designed to safely connect lubricator/riser sections or other equipment with different end connections.

The Crossover Adapter can be a combination of any connection type of box section by pin section and retainer nut.

### FEATURES

- Manufactured from Alloy Steel.
- Supplied with various END connection and combination such as Quick Union / Flange / Studded Flange / Hammer Union / API Thread / Premium Thread available on request.
- 3,000 to 20,000 psi working pressure.
- H2S or Standard service.
- Pressure test to the required Test Pressure.
- Part Number available upon request.

QUN x QUN



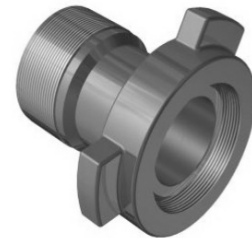
QUN x THREAD



FLANGE x QUN



QUN x HAMMER UNION



QUN x QUN



QUN x THREAD



QUN x QUN



QUN x THREAD



FLANGE X FLANGE



HAMMER UNION

